

IF MISDIRECTED OR UNCLAIMED
RETURN TO: ROC TOC
BILL & GRETTA SEWARD
20361 RIVER VALLEY DRIVE
ANDERSON, CA. 96007

FIRST CLASS MAIL
TIME DATED MATERIAL



SEPTEMBER 2011

SHASTA GEM & MINERAL SOCIETY, INC.

Shasta Gem & Mineral Society, Inc ROC TOC 2011

Elected Officers

President
 Steve Puderbaugh..... 604-2951
 Vice President
 Sara Fenske..... 528-2651
 Secretary
 Phyllis Szynter241-2010
 Treasurer
 Sandra Park..... 246-9822
 Rochelle Ohlson, Assistant 221-8050

Board of Directors

Marianne Sweetwood..... 549-4598
 Zeke Breazeale..... 222-2191
 Bill Doyle..... 549-3039

Junior Advisor & Work Shop Advisor:
 Rochelle Ohlson... 221-8050
 Assistant Junior & Shop Advisor
 Steve Szynter 241-2010

Appointed Committees

Programs
 Sara Fenske..... 528-2651
 Field Trips
 Jim Foster..... 347-1819
 Sara Fenske 528-2651
 Properties
 Bill Seward 365-8641
 Publicity
 Kelly O'Leary 221-7281
 Show Chairman
 Steve Puderbaugh
 Assistant Show Chairman604-2051
 Bill Seward.....365-8641
 Dealer Chairman
 Bill Seward 365-8641
 Membership
 Gretta Seward..... 365-8641
 Chaplin
 Jim Willis222-2331

Sunshine
 Jim Willis.....222-2331
 Scholarship
 Marianne Sweetwood..... 549-4598
 Raffle
 Jim & Pat Foster 347-1819
 Hospitality
 Jan Stone 549-077
 Roc Toc
 Gretta Seward 365-8641
 Coffee
 Jan Stone 549-4077
 Superior Cal.
 Steve Puderbaugh ... 604-2951
 CFMS Directors
 Bob & Jeane Stultz 243-3024
 Kitchen: ALL MEMBERS
 Parliamentarian
 John Ellwanger 275-1055

Board Meeting: : Next to last Monday of each month, location to be determined by the Board.

Regular Meeting: The second Friday of each month, at the Anderson Grange Hall, south of the Redding Airport on Figtree Lane. Potluck dinner starts at 6:30, meeting after approx at 7:30.

Dues: \$15.00 each adult per year, junior membership is \$8.00 each per year paid to the membership chairman. Bulletins for life members are \$5.00 membership chairman.

SGMS is a member of the Superior Federation of the Mineralogical Societies and the Superior California Association. The SGMS is a non-profit organization dedicated to increasing knowledge of gem, minerals and the lapidary arts programs through reading, classes and field trips to perpetuate a deep friendship of fellow rock hounds. Permission is given for use of the material printed in the ROC TOC, provided credit is given. Exchange bulletins are welcome and can be mailed to Gretta Seward 20361 River Valley Dr., Anderson, California 96007-8406.

Shasta Gem & Mineral Society Club workshop is located at the "Marx House", 6471 Airport Road, Anderson, CA 96007. www.shastagemandmineral.com

SGMS Aug 2011 General Meeting

Ariel Dye and Donny Munro led the flag salute to open the SGMS general meeting after we finished our potluck dinner. Our Sunshine report said that Jim Pryor is still in rehab and visiting him would be nice. Joanne would appreciate a call also. Our guests were Jim and Diane Officer, Katy's sister Fran from Oregon, and Mary Bright from Arizona.

In the treasurer's report, our general fund has \$2403.82, the workshop checking has \$3251.69, the raffle checking has \$3692.22, the junior checking has \$1063.32 and the workshop CD has \$6850.53 and the general fund checking has \$2068.80. The raffle tonight made \$180.00, and Ariel and Donny helped with the raffle later after the meeting.

In old business we discussed the progress of dissolving Superior Cal that was done at the last Superior Cal board meeting. All future shows were cancelled and funds are being disbursed. A letter of intent to dissolve the group is being worked on next week. The Popcorn machine will be given to the Paradise club. A banner is being kept. We must dispose of all assets before dissolving.

The work on the workshop roof needs more quotes and the reroofing should be done before the rains start.

In new business a show of hands of people putting cases in the October show was asked for.

A nominating committee for new officers was asked for. John Ellwanger opened the floor for nominations for the three committee officers. Bill Doyle, Tony Duncan, Chris Fenske, and Richard Park were nominated. We voted for three of these by a show of hands and Bill Doyle, Tony Duncan and Dick Park were elected. Bill Doyle asked for a new member to replace an outgoing board member and Rochelle volunteered to replace Mary Ann Sweetwood. The election committee will be calling current officers to determine if they wish to continue in office. A change of date for our fall show was mentioned so there would be no competition from other shows in our near area. John Ellwanger made a motion to close the meeting at 8:00 PM and the motion passed.

FIELD TRIP: The following information could be a fun trip if any of the members wanted to go on a trip:

Shaver Lake, Fresno County: Shaver Lake is being fully drained and will expose Amethyst Cove. There are several materials including quartz (amethyst, smoky, clear, iron stained), feldspar, garnet, epidote, and perhaps others that may be found. The lake hasn't been drained in over 70 years and no one (alive) has seen the bottom dry.

SHOP HINTS

Vinegar, Not Just for Salads

One way to remove carbonates such as calcite from quartz and amethyst is to cover the specimen with fresh vinegar and allow to stand overnight. Repeat if necessary. Wash and then place crystals in washing type ammonia for 8-12 hours. Remove, rinse thoroughly, wipe and air dry.
From Rock pile, via Del Air Bulletin 9/07
When using chrome oxide for polishing, Jade, mix it with a solution of 1/2 water and 1/2 vinegar.
from Crystal Gaze, via Del Air Bulletin 9/07
For the gloss finish on tiger-eye, polish once, dry the stone, then put a drop of vinegar on it. Let it stand for a few minutes, then give it a second polish.

SEPTEMBER BIRTHDAYS

Happy Birthday! We sincerely hope you have a special birthday with your family and friends.

BIRTHSTONE: SAPPHIRE

FLOWER: ASTER

A maiden born when autumn leaves
Are rustling in September's breeze,
A sapphire on her brow should bind,
Twill cure diseases of the mind.

SAPPHIRE

Transparent crystals of mineral corundum, an aluminum oxide, when combined with chromium form Red rubies, when combined with iron and titanium, the sapphire are formed. Colors range from clear to blue-black but highly prized are a cornflower blue with a soft velvet luster. Some, which contain inclusions of rutilite, giving a "star" effect, are made into cabochons, but most are faceted. They occur in metamorphic rocks; some localities include India, Thailand, Burma, Afghanistan, and Yogo Gulch, Montana in the U.S. Sapphires have a hardness of 9, cleavage none, fracture uneven, crystals hexagonal and are transparent to translucent.

SHASTA GEM & MINERAL SOCIETY ANNUAL SHOWS SCHEDULE: This year our gem show will be held on October 15th & 16^h. We will start setting up Friday, October 14^h at 8 am. Setting up should take no more than three hours. We need help from all available members.

After the show Sunday, we will take down the tables and display cases and carefully place them in the club trailer, and then clean the building. Cleaning up should take approximately two hours. Again, we can use help from all available members. There will be many things that you can do to help. Mark your calendars with these dates.

DURING THE SHOW we need ten to fifteen members available to work Saturday and Sunday. Two members will be needed taking tickets, one at the silent auction table, one at the grab bag table and many as possible doing security during the show. We will have sign-up sheets available at the next meeting.

In past years, most of our members came for the entire duration of the show and stayed all day to help where help was needed. Give this a thought when it is time for to sign up to help at the show. **WE NEED HELP FROM ALL MEMBERS.**

DINNER will be served Friday night to the dealers, displayers, demonstrators and club members that are there to help setting up and putting on the show. The dinner will start at approximately 6 pm.

SILENT AUCTION MATERIAL is always more than welcome. If you have material you would like to donate, it would be greatly appreciated. If you are unable to bring the material to the show, talk to one of the members and we will gladly arrange for it to be picked up.

SHOW FLYERS are available for you to place in any business that has an area for such material. It will help to get this information to the public. We want them to attend our gem show!

SUNSHINE: Jim Pryor has moved to the Marquis Care, 3550 Churn Creek Road. The phone number is 222-3630. You may want to call first to make certain he hasn't gone home. Jim enjoys visits from all his friends.

OUR OCTOBER SHOW date needs to be changed back to the second week of October, like it was for many years. The fairgrounds manager was the one that changed the date after we had sent out contracts and show flyers; which we had to do over. With this change we would no longer have our show and meeting on the same night. It would also not fall on the same date as the Placerville and Santa Rosa shows. This date change would be come effective 2012.

FOR SALE; The Humboldt Gem & Mineral Society has a 36" saw for sale. They say it has a very good blade and the machine is easy to move. It has been listed on Craig's List, and they have lowered the price to \$2,800. If you are interested call John Martin at 441-2598.

SHASTA GEM & MINERAL

RAFFLE REPORT AUGUST

12.2011

We thank you all for the participation in the raffle, those who donated items and those who purchased tickets.

Donating Items :

1. Steve Puderbaugh...1 Rhodonite slab, thunder egg, & a slab.
2. Richard & Sandy Park...Selections of opal pieces.
3. Glen Chamberlain...Selection of opal pieces.
4. Kelly O'Leary-Cary....Tourmaline gems, opals & Chinese writing rock.
5. Jim & Kathy Jensen....The Pet King, water & food bowls for pets, traveling or at home.
6. Bill & Susan Doyle...Millville petrified wood, & polished Jasper rock.
7. Debbie Duncan....Dugway geodes (2)
8. Diana Officer....Valleyview thunder egg---Oregon
9. Bill & Gretta Seward..Apoyhylite 4" X 8" cluster.
10. Charlie McKee.....2 flats of crystal clusters (variety).

Jim Jensen and Denise Jarvis helped tear tickets this evening.

Thank you both very much.

Ariel Stacy and Donny Munro helped Jim draw tickets and matched numbers.

Thank you both very much.

We appreciate the help at every meeting, don't be shy !!!!! Just come on up when the tickets are being sold.

NOTE: Please remember our Show in October, plan to help out a little or a lot, your help will be appreciated. Its work, but a lot of fun and get to know other members in the club...

Sincerely, Your Raffle

Team

Jim and Pat Foster

Other Peridot and Sardonyx Facts/Beliefs

Peridot: The New Grolier Electronic Encyclopedia pronounces it "per-i-doh", but Webster's Dictionary pronounces it "per-i-dat" so it looks like either way is correct. Peridot is gem-quality Olivine, a ferromagnesian silicate mineral, and is transparent olive green with a hardness of 6.5 to 7, a vitreous luster, and a specific gravity of 3.3 to 3.4. Peridot is found on Saint John's Island in the Red Sea, in Burma, and in the southwestern United States. The finest peridot has been produced from the mines on Saint John's Island in the Red Sea since at least AD 70. Burmese peridot is noted for its size. Peridot is associated with the astrological sign of Libra and is assigned to the sun. It is believed to cure liver disease and dropsy, to free the mind from envious thoughts, and to dispel terrors of the night, for full magical power it should be set in gold.

Sardonyx: A fibrous, chalcedonic mineral, a banded variety of cryptocrystalline quartz that is similar to onyx and agate, sardonyx consists of parallel layers of clear red or reddish-brown carnelian or sard, alternating with layers of white chalcedony. The reddish color is caused by impurities of iron oxide. As a gem, sardonyx is cut so that the layers are visible on the faces. It was valued by the Romans and other ancient people. In the middle ages it was believed to banish grief and woe, and the help bring happiness.

Ref. The New Grolier Electronic Encyclopedia, Encarta 97, Compton's Interactive Encyclopedia, The Complete Metalsmith - by Tim McCreigh

Hunting Trilobites in the House Range Of Northwestern Utah

by Karen Blount

Trilobites are found in Paleozoic rocks. They are some of the earliest life forms preserved in the fossil record. For almost 300,000,000 years, trilobites were the most plentiful and successful of all the arthropods. Many soft bodied life forms existed during this time period, but their fossil record is very rare. Presently, only two locations exist where Cambrian soft body fossils are preserved. Much of what we know of the Cambrian environment comes from studying trilobites.

Trilobites are classified in the Phylum Arthropoda. The name Arthropoda means "jointed feet". Actually, from head to whatever serves as a tail, the typical arthropod is a series of segments, or somites, connected by movable joints. Their class name Trilobita (meaning three lobed ones) comes from their morphology of trilobation or three lobes running lengthwise down their body or hard shell. Segments are separated by furrows, not joints. These grooves divide every trilobite into an axial lobe in the middle and two pleurae (one on each side of the

body). The shell (exoskeleton) is made up of three layers secreted by the skin. At the surface is a waxy sheet (waterproofing), and below this a layer of chitin with calcium. The layer, next to the skin, is most probably a thin flexible layer of chitin. Current theory makes trilobites the descendents of very ancient annelid worms. Trilobites vary from very simple, plain creatures with no frills to very exotic animals with fancy appendages and multi-segmented body parts. Recent study of trilobites with their soft parts preserved has changed some of the interpre-

tation of how these creatures functioned. If you are interested, there is a fine book that covers the subject thoroughly, but is still suited for the amateur. *Trilobites* (second edition) is by Riccardo Levi-Setti (about \$50.00).

Field Trip to the House Range

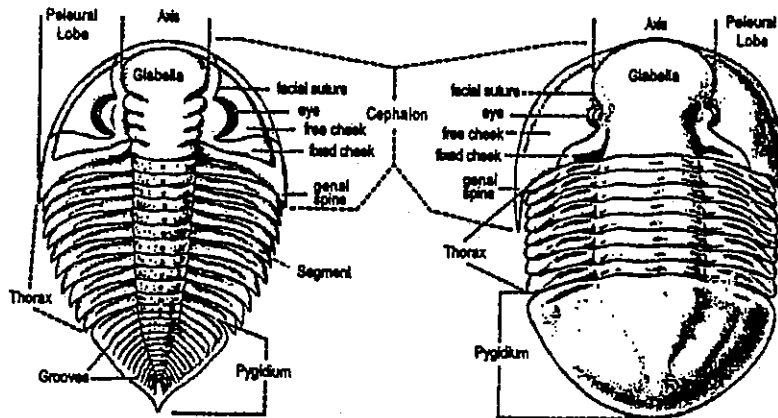
The trilobites found in the House Range of Utah are Cambrian in age. There is a fee dig at Antelope Springs run by U-Dig Fossils of Delta, Utah. Their address is P.O. Box 1113 Delta, Utah 84624. You can phone them at (801) 864-3638. The quarry is open from April 15 thru October 15 (closed Sundays). Collecting fee during the 1995 season was \$20.00 per person for 4 hours, \$30.00 per person for all day.

This section of rock is from the Middle Cambrian time. The quarry is located in a very hard blue-grey shale. The overburden has been removed and the formation fractured by dynamite. They provide picks and buckets and a basic information pamphleteers as to what to look for (impressions vs. molted shells vs. the whole individuals). There is a large amount of

material already loose to work in or you can dig out in-place material if the U-Dig work crew is not active. We found the best fossils in material that was thinly layered. It split into quarter inch thick slabs. Most of the trilobites we found

were *Elrathia kingii* with a few *Peronopsis interstricta*. We found impressions and parts of *Asaphicus wheeleri*, but no complete fossils. In half a day, we collected plenty of material. Keepers included not only complete fossils but nice impressions and some molted shells. What we collected was not large, mostly in the 1 1/2 inch range. Some of the trilobites found in this area are quite rare (*Olenoides nevadensis* with fancy flowing ap-pendages is one example). This is a fun collecting spot. In fact, our three year old found the best trilobite of the day.

--via Gems of the Rogue--



*Shows and Events
sponsored by
CFMS Clubs & Societies!*

*Please submit your
Show or Event information as
soon as you have a date.
Email or mail to:*

SHOW DATES
Susan Chaisson-Walblom
42122 52nd St. West,
Quartz Hill, CA 93536
Email: schaisson@yahoo.com

2011

August 5, 6 & 7: NIPOMO, CA
St. Joseph's Church Recreation Hall
298 South Thompson Avenue
Hours: 10am – 5pm Daily
Gloria Dana (805) 929-6429
Cell (805) 709-4076
info@onsinc.org
www.onsinc.org

August 6 & 7: SAN FRANCISCO, CA
San Francisco Gem & Mineral Society
Presidio Golden Gate Club
135 Fisher Loop
Hours: Sat. 10 am -6pm; Sun. 10am – 5pm
Carleen Mont-Eton (415) 564-4230
publicity@shows.sfgms.org
<http://www.sfgms.org>

September 2-5: FORT BRAGG, CA
Mendocino Coast Gem & Mineral Society
Town Hall
363 N. Main Street (corner of Main & Laurel)
Hours: Fri., Sat. & Sun. 10-6; Mon. 10-4
Jerry Sommer (707) 917-1833

September 10 & 11: DOWNEY, CA
Delvers Gem & Mineral Society
Woman's Club of Downey
9813 Paramount Blvd.
Hours: Sat. 10am-6pm; Sun. 10am-4pm
Guynell Miller (562) 633-0614

September 17 & 18: PASO ROBLES, CA
Santa Luda Rockhounds
Pioneer Park & Museum
2010 Riverside Avenue
Hours: 10 am – 5 pm
Dale Conrad (805) 226-0719
Conrad@att.net
www.sirockhounds.org

Stockton Lapidary & Mineral Club
Scottish Rite Masonic Center
33 W. Alpine Avenue
Hours: 10 am – 5 pm Daily
Jan Bradley or Dorothy Tonnacliff
(209) 629-3837 / (209) 603-4539
simcshow@juno.com
www.stocktonlapidary.com/show

September 23, 24 & 25: SAN BERNARDINO
Orange Belt Mineralogical Society
Western Regional Little League Park
6707 Little League Drive
Hours: 9:00 a.m. to Dusk Daily
Steve Williams (909) 389-8680
ironelk@ymail.com
<http://www.obmsrocks.yolasite.com>

September 24 & 25: MONTEREY, CA
Carmel Valley Gem & Mineral Society
Monterey County Fairgrounds
2004 Fairgrounds Road
Hours: Sat. 10am-6pm; Sun. 10am-5pm
Matt Biewer (831) 659-4156
mattbiewer@aol.com
www.cvgms.org

October 2: FALLBROOK, CA
Fallbrook Gem & Mineral Society
123 W. Alvarado St. Ste. B
Hours: 10:00 am – 4:00 pm
Janice Bricker (760) 728-113-
fgms@sbcglobal.net
www.fgms.org

October 8 & 9: TRONA, CA
Searles Lake Gem & Mineral Society
13337 Main Street
Hours: Sat. 7:30am-5pm; Sun. 7:30am-4pm
Jim & Bonnie Fairchild (760) 372-5356
slgms@jwvisp.com
www.1.jwvisp.com/tronagemclub/

October 8 & 9: GRASS VALLEY, CA
Nevada County Gem & Mineral Society
Nevada County Fairgrounds
11228 McCourtney Rd.
Hours: 10-5 both days
Kim Moore (530) 470-0388
kmoore160@comcast.net
<http://www.ncgms.org>

October 15: WEST HILLS, CA
Woodland Hills Rock Chippers
First United Methodist Church
22700 Sherman Way
Hours: 10:00 am- 5:00 pm
Mary Beth Pio
info@rockchippers.org

October 15 & 16: WHITTIER, CA
Whittier Gem & Mineral Society
Whittier Community Center
7630 Washington Blvd.
Hours: 10 am – 5 pm Daily
Marcia Goetz (626) 260-7239
Joemar1@verizon.net

Santa Rosa Mineral & Gem Society
Veterans' Memorial Auditorium
1351 Maple Avenue
Hours: Sat. 10am-6pm; Sun. 10am-5pm
Debble Granat (707) 542-1651
santarosarockshow@hotmail.com
www.srmgs.org

October 15 & 16: ANDERSON, CA
Shasta Gem & Mineral Society
Shasta District Fairgrounds
Briggs Street
Hours: Sat. 9am-5pm; Sun. 10am-4pm
Steve Puderbaugh (530) 365-4000
Cell (530) 604-2951
steve@applyaline.com
www.shastagemandmineral.com

October 15 & 16: PLACERVILLE, CA
El Dorado County Mineral & Gem Society
El Dorado County Fairgrounds
100 Placerville Drive
Hours: 10am -5pm Daily
Karen Newlin, (530) 676-2472
info@rockandgemshow.org
www.rockandgemshow.org

October 22 & 23: LOS ALTOS, CA
Peninsula Gem & Geology Society
Los Altos Civic Center-Youth Center
One San Antonio Road
Hours: Sat. 10am-5pm; Sun. 11am-5pm
Steve Jobe (408) 279-2069
steve_jobe@sbcglobal.net
www.pggms.org

November 5 & 6: SAN DIEGO, CA
San Diego Gem & Mineral Society
Al Bahr Shrine Center
5440 Kearny Mesa Road
Hours: Sat. 9:30am – 5pm; Sun. 10am-4pm
Bob Hancock (619) 461-5783
Cell (619) 889-6886
RHBOBHANCOCK@cs.com
www.sdmgs.org

November 5 & 6: RIDGECREST, CA
Indian Wells Gem & Mineral Society
Desert Empire Fairgrounds (Mesquite Hall)
520 West Richmond Road
Hours: 9:00 am -5:00 pm Daily
John DeRosa (760) 375-7905
IndianWellsGems@hotmail.com
www.indianwells.weebly.com

November 5 & 6: LANCASTER, CA
Palmdale Gem & Mineral Club
Antelope Valley Fairgrounds
2551 West Ave. H & Hwy 14
Hours: 9am – 5pm daily
Cheri George (562) 243-8470
lizardwoman3@yahoo.com
www.palmdalegemandmineral.com

November 12 & 13: YUBA CITY, CA
Sutter Buttes Gem & Mineral Society
Yuba Sutter Fairgrounds (Franklin Hall)
442 Franklin Avenue
Hours: Sat. 9am- 5pm; Sun. 9am-4pm
Erik Anspaugh (916) 869-7272
rocks@hughes.net
www.sutterbuttes.net

JUNIOR PAGE

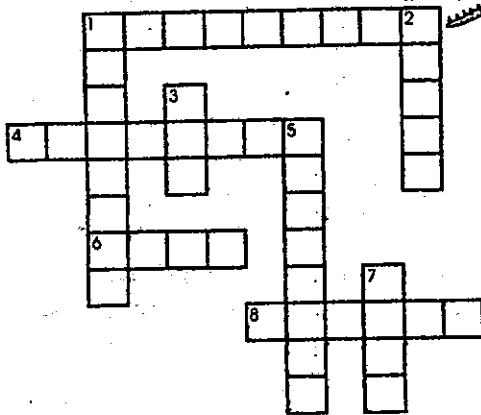
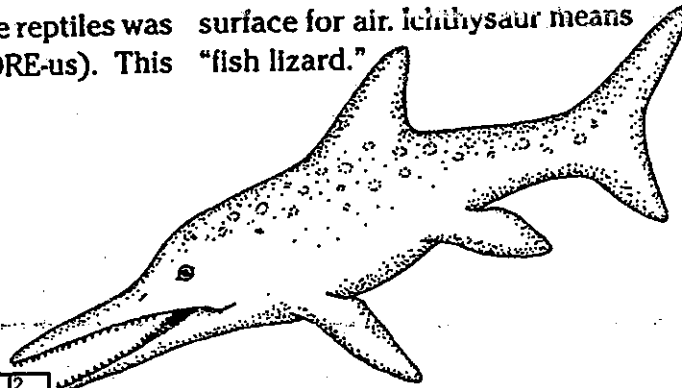
Reptiles in the Sea

Many sea-going reptiles lived during the Mesozoic era. ELASMOSAURUS (EE-laz-mo-SORE-us) had a very long neck that made up one-half the length of its forty-five-foot-long body. Using its powerful flippers it swam much like modern turtles do. Its jaws were lined with sharp teeth to grip slippery fish.

One of the biggest marine reptiles was KRONOSAURUS (KRO-no-SORE-us). This

giant grew up to fifty-five feet in length. It probably ate other reptiles.

The ICHTHYOSAURS (ik-thee-o-SORES) were probably the fastest seagoing reptiles. They looked very much like modern dolphins. Ichthyosaurs did not lay eggs as most reptiles do. Their young were born live and would immediately swim to the surface for air. Ichthysaur means "fish lizard."



ACROSS

1. _____ were a branch of archosaurs
4. Kronosaurus may have eaten these _____
6. Elasmosaurus had a very long _____
8. Ichthyosaur means "fish _____"

DOWN

1. Ichthyosaurs looked like these mammals _____
2. Elasmosaurus' teeth were very _____
3. Ichthyosaurs lived in the sea and breathed _____
5. Certain archosaurs were _____
7. Ichthyosaurs were very _____



Shasta Gem and Mineral Society, Inc.
58th Annual
GEM, MINERAL & JEWELRY SHOW

October 15th & 16th, 2011
Shasta County Fairgrounds
Anderson, CA



Saturday 9- 5
Sunday 10- 4
Kids Activities

Gems, Crystals, Fossils
Lampwork Beads, Beads,
Finished Jewelry
Polished Stones
Jewelry Making Supplies
Equipment
Demonstrations
Bar-B-Que
Exhibits
Dealers
Free Admission-Free Parking



check us out at: www.shastagemandmineral.com

September 2011

Workshop Hours
 Tuesdays - 5:30P.M. to 8:30 P.M.
 Saturdays - 10A.M. to 2 P.M.

Sunday	Monday	Tuesday	Wednesday	Thursday	Friday	Saturday
				1	2	3 Bill Seward Charlie McKee Weekend Shows: Stockton
4	5	6 Steve Puderbaugh	7	8	9 Club Meeting Anderson Grange 6 P.M.	10 Juniors Rochelle Ohlson Steve Sznyter Weekend Shows: Ferndale, Roseburg
11	12	13 Steve Lay	14	15	16	17 John Ellwanger Parks
18	19 Board Meeting Workshop 6 PM	20 Zeke Breazeale	21	22	23	24 Juniors & Adults Rochelle Ohlson Steve Sznyter
25	26	27 Bill & Susan Doyle	28	29	30	